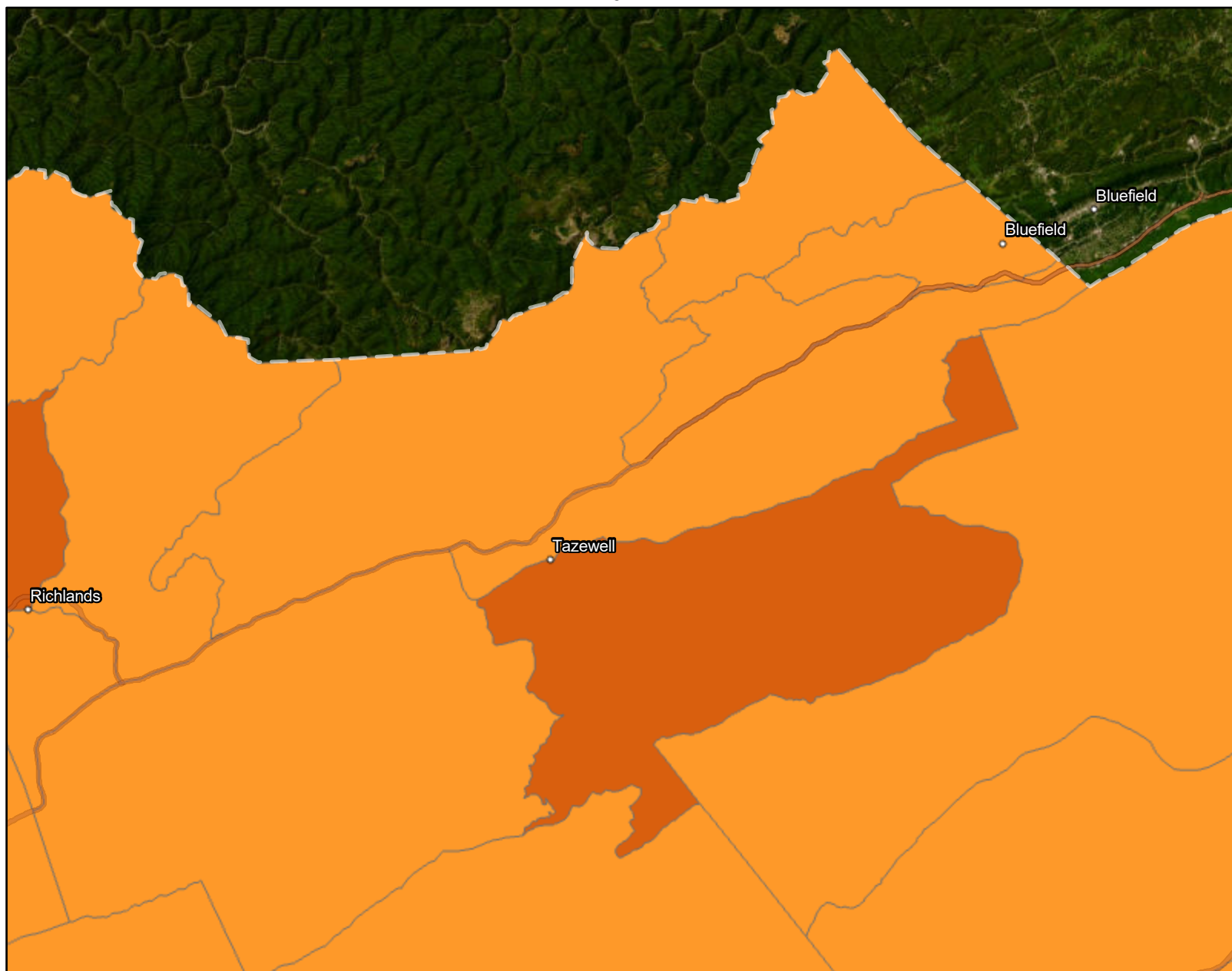


# Tazewell Social Vulnerability Index Score

## Social Vulnerability Index

- Moderate Social Vulnerability
- High Social Vulnerability



November 9, 2023

Scale: 1:352,038  
0 2 4 8 mi  
0 3.25 6.5 13 km

Earthstar Geographics  
William & Mary, Center for Coastal Resources Management (CCRM) at Virginia Institute of Marine Science (VIMS)  
VGIN, Esri, HERE, Garmin, SafeGraph, FAO, METI/NASA, USGS, EPA, NPS

**VIMS** | WILLIAM & MARY  
VIRGINIA INSTITUTE OF MARINE SCIENCE  
CENTER FOR COASTAL RESOURCES MANAGEMENT

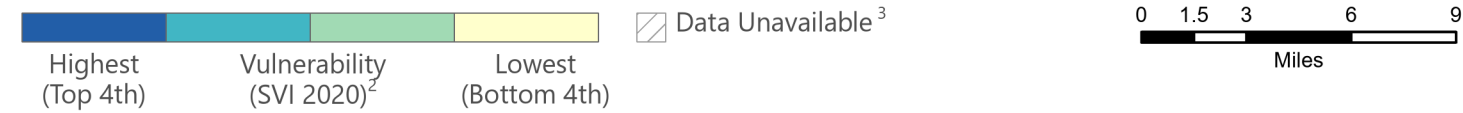
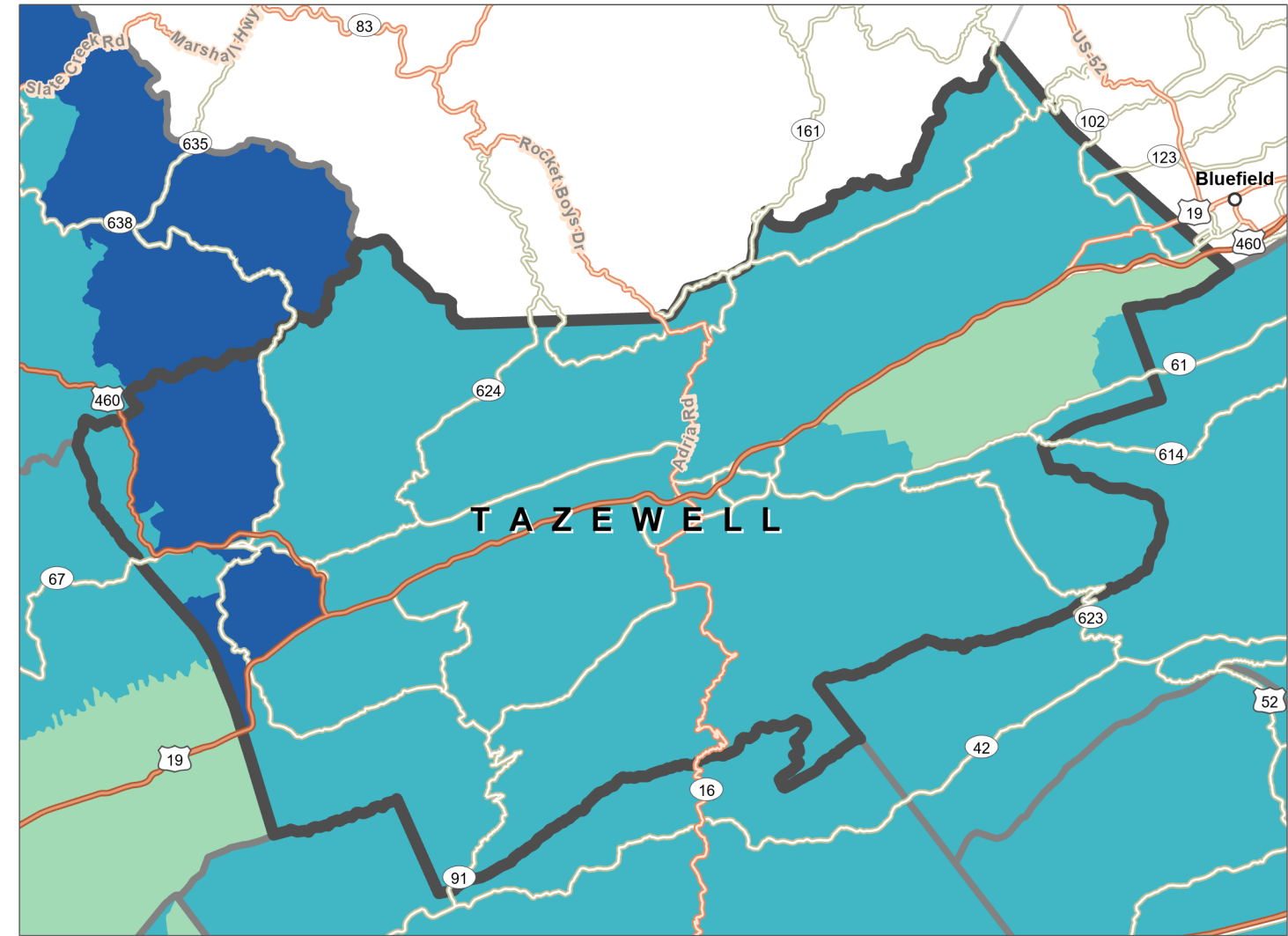
**ADAPTVA**

CDC/ATSDR Social Vulnerability Index 2020

TAZEWELL COUNTY, VIRGINIA



Overall Social Vulnerability<sup>1</sup>



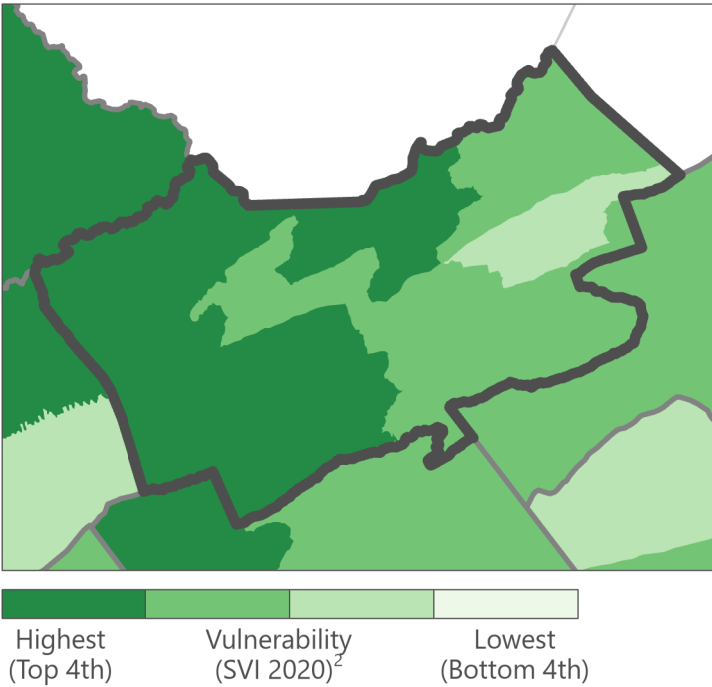
**Social vulnerability** refers to a community's capacity to prepare for and respond to the stress of hazardous events ranging from natural disasters, such as tornadoes or disease outbreaks, to human-caused threats, such as toxic chemical spills. The **CDC/ATSDR Social Vulnerability Index (CDC/ATSDR SVI 2020)<sup>4</sup> County Map** depicts the social vulnerability of communities, at census tract level, within a specified

county. CDC/ATSDR SVI 2020 groups **sixteen census-derived factors** into **four themes** that summarize the extent to which the area is socially vulnerable to disaster. The factors include economic data as well as data regarding education, family characteristics, housing, language ability, ethnicity, and vehicle access. Overall Social Vulnerability combines all the variables to provide a comprehensive assessment.

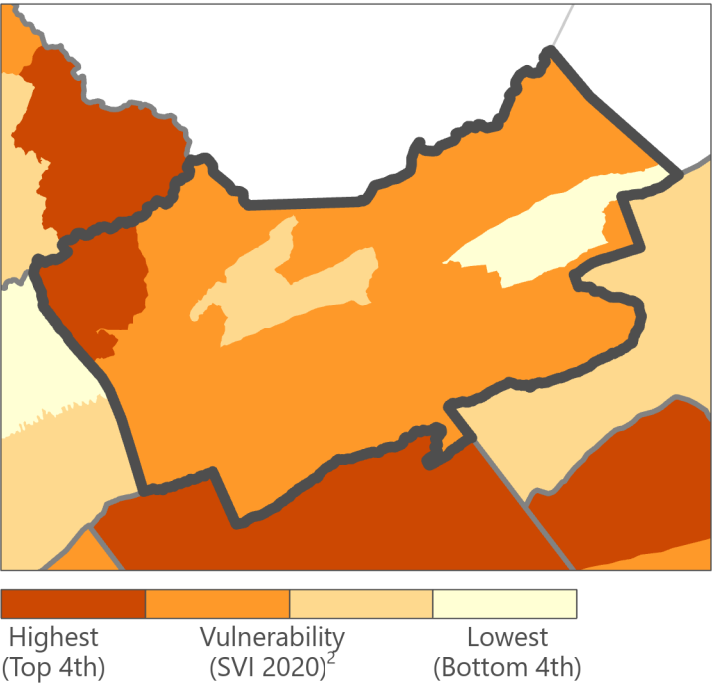
CDC/ATSDR SVI 2020 – TAZEWELL COUNTY, VIRGINIA

CDC/ATSDR SVI Themes

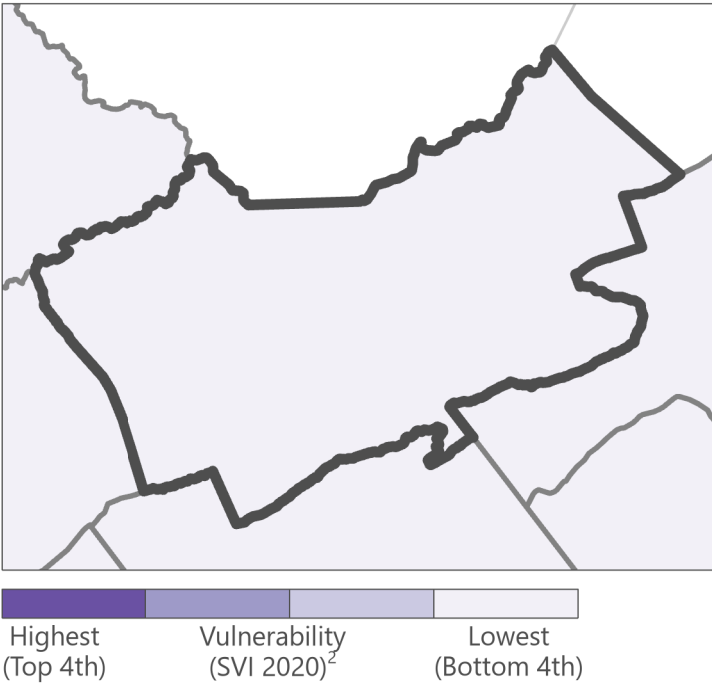
Socioeconomic Status<sup>5</sup>



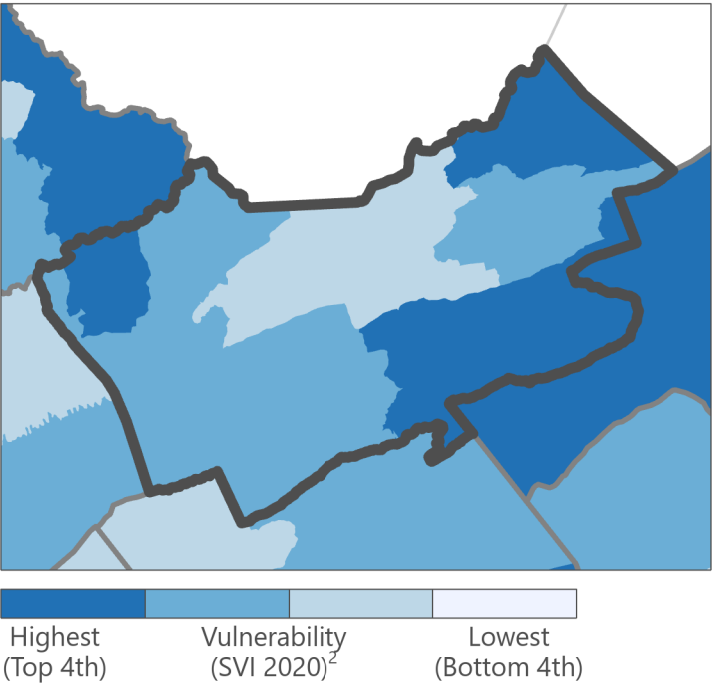
Household Characteristics<sup>6</sup>



Racial and Ethnic Minority Status<sup>7</sup>



Housing Type/Transportation<sup>8</sup>



**Data Sources:** <sup>2</sup>CDC/ATSDR/GRASP, U.S. Census Bureau, Esri® StreetMap™ Premium.  
**Notes:** <sup>1</sup>Overall Social Vulnerability: All 16 variables. <sup>3</sup>Census tracts with 0 population. <sup>4</sup>The CDC/ATSDR SVI combines percentile rankings of US Census American Community Survey (ACS) 2016-2020 variables, for the state, at the census tract level. <sup>5</sup>Socioeconomic Status: Below 130% Poverty, Unemployed, Housing Costs-to-Income Ratio, No High School Diploma, No Health Insurance. <sup>6</sup>Household Characteristics: Aged 65 and Over, Aged 17 and Younger, Civilian with a Disability, Single-parent Household, English Language Proficiency. <sup>7</sup>Race/Ethnicity: Racial/ethnic Minority. <sup>8</sup>Housing Type/Transportation: Multi-unit, Mobile Homes, Crowding, No Vehicle, Group Quarters.  
**Projection:** NAD 1983 Virginia Lambert.  
**References:** Flanagan, B.E., et al., A Social Vulnerability Index for Disaster Management. *Journal of Homeland Security and Emergency Management*, 2011. 8(1). CDC/ATSDR SVI web page: <https://www.atsdr.cdc.gov/placeandhealth/svi/index.html>.